



Date City

# HAZARD MAP






(Revised March 2022)

English Guides



## About the 5 alert levels

In order for residents to evacuate based on their own judgement, evacuation information will be provided and categorized in alert levels ranging from one to five. We ask that you take note of what actions you should take in the event of a disaster so that you will always be prepared for an emergency should one occur.

Alert level	New evacuation information	
<b>5</b>	Disaster occurrence/ Disaster impending 	<b>Emergency ※1</b> <b>Safety Measures</b>
<Be sure to evacuate by alert level 4!>		
<b>4</b>	High risk of disaster 	<b>Evacuation Instruction</b>
<b>3</b>	Risk of disaster 	<b>Evacuation of the Elderly, Etc. ※2</b>
<b>2</b>	Weather worsening 	<b>Heavy Rain, Flood or Storm Surge Advisories</b> <b>(Japan Meteorological Agency)</b>
<b>1</b>	Risk of weather worsening 	<b>Probability of Warnings</b> <b>(Japan Meteorological Agency)</b>

Note 1: Alert level 5 is not always issued because, for example, municipal authorities are unable to accurately grasp the status of a disaster.

Note 2: Alert level 3 is the time when people other than the elderly, etc. should also begin to adjust their behavior or prepare for evacuation where necessary, or evacuate of their own accord if they sense a danger to their lives.

Siren on the disaster radio 3 times.

Alert level 5 indicates a life-threatening situation in which you can no longer evacuate safely. Do not wait for the alert level 5, Emergency Safety Measures to be issued!

Siren on the disaster radio 2 times.

Evacuation Recommendation will no longer be issued. All residents should evacuate from dangerous places upon the alert level 4, Evacuation Instruction.

Elderly people or people with disabilities, who may need more time to evacuate, should evacuate from dangerous places upon the alert level 3, Evacuation of the Elderly, Etc.

# ! What should I do to “evacuate”?

Evacuation is more complicated than simply moving to a primary/junior high school or community center.  
“Evacuate” means to escape from the danger.  
There are four courses of action.

Evacuate to an evacuation site designated by your local authority

What to take with you  
•Masks  
•Disinfectant solution  
•Thermometer  
•Slippers  
Etc.



Evacuate to a safe home of a relative or acquaintance

You should talk to them in advance about evacuating during a disaster.

Note: Check your hazard map for whether it's safe.



Decide in advance how to act during a disaster

Evacuate to a safe hotel, inn, etc.

You will need to pay the usual accommodation charges.  
Try to book or check in advance.

Note: Check your hazard map for whether it's safe.



Shelter indoors

You need to check your hazard map for whether you meet the “3 conditions” explained below.

--- Probable Maximum Inundation Depth

Note: If there is a danger of landslides, you should not shelter indoors.



If you meet the “3 conditions” then it may be possible to shelter indoors even during a flood

1 Your home is not located in an assumed flooding area where houses are likely to collapse.  
If it is.....

Wooden houses may collapse due to the high speed of the flowing water  
You entire house may be washed away as the ground crumbles away

2 Your home is higher up than the flooding level

3 You can hold out until the water recedes and have sufficient supplies of water/food, etc.

If not.....

You may struggle to secure water, food, medicine, etc. or may be unable to use facilities such as electricity, gas, water, and toilets

Note: Since 1 the assumed flooding area where houses are likely to collapse and 3 the time until the water recedes (duration of the flooding) may not be shown on your hazard map, please inquire with your municipal authority.

Going outside during torrential rains is dangerous, even in a car. If you have no choice but to spend the night in your car, take great care to check your surroundings, etc., to make sure you are not caught in a flood.

# Earthquake Countermeasures

## Manual for what to do during an earthquake

An  
earthquake  
occurs



**No matter what, protect yourself!**

It's an earthquake! Personal safety comes first

If you feel strong tremors or receive an Earthquake Early Warning, get down, cover your head, and wait until the shaking decreases.



**Deal with flames quickly to prevent fires!**

Strong tremors have died down

Put out the flames in the kitchen, stoves, etc. When evacuating, turn off the electrical breaker and close off gas valves.

After 2~5  
minutes



**Confirm and ensure the safety of your home!**

After extinguishing flames

Confirm and ensure the safety of your family, and obtain disaster and evacuation information. Additionally, secure an evacuation exit.

After 5~10  
minutes



**Confirm the safety of your neighbors and offer help if needed!**

After going outside

Cooperate with those in your neighborhood to put out fires and rescue people pinned under furniture.

After 10  
minutes ~  
half a day



**Do what you can to pull through the next two or three days!**

A few days after evacuating

For a few days following an earthquake, electricity, water, food supply etc., may be cut off. In the meantime, be sure to regularly prepare daily necessities so that you can survive without the usual necessities.

After half  
a day ~  
three days



## When Indoors

### Inside a House

- When you feel strong shaking, ensure your personal safety.
- When the shaking calms down, quickly check for any fires (don't forget to shut off the electrical breaker and gas valves)
- Ensure the safety of those who may need support, such as infants, the sick or elderly people, etc.
- Do not walk around barefoot (shards of broken glass will cause injury)
- Quickly evacuate to a safe place outdoors.

### Department Stores & Supermarkets

- Protect your head with a bag or something similar, and distance yourself from large windows and merchandise. Lean close to a pillar or wall, listen to the directions of store attendants, and act in a calm manner.

### Apartment Buildings

- Open doors and windows to provide an exit for evacuation
- Never use an elevator to evacuate. Use the stairs to avoid being swallowed up in flames and smoke.

### Halls & Theatres

- Protect your head with a bag or something similar, hide between seats, and listen to the instructions of facility staff. Take action in a calm



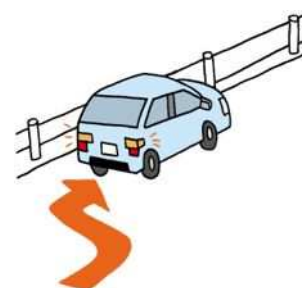
## When Outdoors

### On the street

- Do not stay in place, but instead use a bag, or something similar, to protect your head from falling objects such as window glass, signboards, etc. Evacuate to a safe place, such as vacant land, a park, etc.
- When there is no vacant land nearby, calmly assess the circumstances of your surroundings, and move to a place that is far from buildings and has a high degree of safety.
- Do not go near vending machines or concrete-block walls.
- Watch out for dangling power cables, or utility poles that seem ready to topple.

### When Driving a Car

- Grip the handle firmly, gradually reduce speed, stop on the left side of the road while ensuring space for emergency vehicles to pass by, and turn off the engine.
- Until the tremors weaken, calmly check your surroundings, and collect information via the car radio.
- If evacuation is necessary, leave the keys in the ignition and the doors unlocked. Evacuate on foot, without forgetting to take along valuable items such as the vehicle inspection certificate, etc.



### Near the Coast

- Evacuate to high ground, and listen carefully to tsunami information. Do not venture near the coast until the tsunami alert or warning has been lifted.

### Inside Trains, Etc.

- Firmly grasp the hand rails or straps with both hands.
- Even when the train stops between stations, do not take any actions uninstructed like opening the emergency door valve and exiting the train, or jumping out of the windows.
- Follow the train crew's instructions and act calmly.



## Fire Countermeasures

### 3 General Rules for Quickly Fighting Fires

Do not think that you can extinguish a fire by yourself; notify your neighbors of the fire and quickly call 119. If the fire cannot be extinguished in its early stages, escape immediately.

#### 1 Notify Others Quickly

- Shout “FIRE!” in a loud voice, and seek assistance from neighbors. If you are unable to shout, bang on an object like a kettle to make the accident known
- Even if case of a small fire, call 119. The person who discovered the fire should try extinguishing it, while a person nearby handles the emergency call.

#### 2 Extinguishing Fires Quickly

- Limited to fires which can be extinguished within three minutes of ignition
- Do not think that fires can only be extinguished with water or a fire extinguisher; use things close at hand, such as using a mat to beat out flames, or a blanket to smother them.

#### ◆ Rapid Firefighting Techniques Based on Fire Source

##### Pot of Cooking Oil

Never pour water on the fire in a panic. If there is no fire extinguisher, drape a large wet towel or sheet over it from the front to starve the flames of air and extinguish the fire.

##### Bathroom

Even if you notice a fire in the bathroom, never open the door without proper preparation, as there is the danger of the fire growing stronger with the air entering the room. Turn off the gas supply, open the door cautiously, and then fight the fire.

##### Kerosene Stoves

Put out the fire by pouring water on the top (pouring on the sides may cause the kerosene to jump out and spread). If it seems that the kerosene will spread, cover it with a blanket, and then pour water on it to extinguish the flames.

##### Electric Appliances

There is the risk of electrocution if water is poured on immediately. First pull the power cord out from the outlet (terminating power at the breaker if possible), then extinguish the fire.

##### Clothing

If you notice that the clothes you are wearing are on fire, one method of extinguishing the flames is to roll on the ground. If your hair catches on fire, cover your head with clothing (avoid synthetic fibers) or a towel.

##### Curtains and Interior Sliding Doors

If a fire begins to spread and climb upwards on things like curtains and sliding doors, there is not much time left. Tear down the curtains or kick down the doors to keep the fire from reaching the ceiling, and then extinguish the flames.

#### 3 Escape Quickly

- If the fire spreads to the ceiling, firefighting is no longer possible. Escape promptly.
- When escaping, close the windows and doors of the burning room to cut off the supply of air.
- In order to avoid breathing in smoke, which contains carbon monoxide and other poisonous gases, take a low posture when escaping, and cover your mouth with a mask, towel, etc.

## How to Use a Fire Extinguisher

In the case of dry power or enhanced liquid fire extinguishers

- ① Hook onto the safety pin with your finger and pull it up and out
- ② Remove the hose and aim it at the base of the fire
- ③ Forcefully grip the lever and spray



## ◆ How to Hold a Fire Extinguisher

- Fight the fire from upwind, with your back to the wind. Don't face the fire squarely.
- Bend your knees, and stand as low to the ground as possible. Assume a posture that allows you to avoid heat and smoke.
- Don't be deceived by the rising flames and smoke, but instead point the nozzle at what is burning, and brush from side to side as though you were sweeping the flames

## Fire prevention comes first!

Due to revisions in the Fire Service Act, the installation of residential fire alarms has been made mandatory.

Please install them to eliminate fire-related deaths.

### Places to Install Residential Fire Alarms

- Bedrooms ... Installation is necessary in all bedrooms (including rooms used for sleeping, such as those for children and the elderly)
- Staircases ... Installation is necessary on the ceilings of staircases to bedrooms
- Kitchens ... Installation is also necessary in kitchens



Caution: Though there are differences between types, the period for changing out a residential fire extinguisher is ten years. Please change them on-time.

## Location of disaster prevention radios (outdoor speakers)

No.	Area	Location	Page of 【Date City HAZARD MAP (Japanese version)】
D1	Date	Date Health & Welfare Center	P27
D2	Date	Date Central Exchange Hall	P27
D3	Date	Date Eastern Exchange Hall	P28
D4	Date	Hakozaki Rural Environment Improvement Center	P27
D5	Date	Tamachi Community Fire Station	P27
Y1	Yanagawa	General Affairs Office, Yanagawa Branch	P24
Y2	Yanagawa	Yanagawa Central Exchange Hall	P24
Y3	Yanagawa	Minami-machi Tanigawa Danchi	P24
Y4	Yanagawa	Yanagawa Kotobuki Health Center	P24/P25
Y5	Yanagawa	Mukaikawara Rural Park	P23
Y6	Yanagawa	Shinkai Community Fire Station	P24
Y7	Yanagawa	Awano District Exchange Hall	P23
Y8	Yanagawa	Ōzeki Kaikan	P31
Y9	Yanagawa	Ōzeki-Tanaka Fire Engine Garage	P24
Y10	Yanagawa	Ōzeki-Kambara Fire Engine Garage	P30/P31
Y11	Yanagawa	Abukuma Express Nitta Station Area	P30
Y12	Yanagawa	Sekimoto District Exchange Hall	P30
Y13	Yanagawa	Shirane District Exchange Hall	P26
Y14	Yanagawa	Shirane-Ōkubo Fire Engine Garage	P26
Y15	Yanagawa	Shirane-Ochiai Assembly Hall	P32
Y16	Yanagawa	Yamafunyū Exchange Hall	P22/P26
Y17	Yanagawa	Yamafunyū-Uchikoshi Community Firefighting Center	P26
Y18	Yanagawa	Yamafunyū-Fukada Fire Engine Garage	P22
Y19	Yanagawa	Funyū-Maeda Fire Engine Garage	P21
Y20	Yanagawa	Funyū Myojin-mae Public Road	P22
Y21	Yanagawa	Ōgoe Pressure Pump Station	P22
Y22	Yanagawa	Tomino District Exchange Hall	P25
Y23	Yanagawa	Isazawa District Exchange Hall	P20/P21
Y24	Yanagawa	Isazawa-Tsutsumigashira Mountain Forest	P20/P21
Y25	Yanagawa	Isazawa Athletic Plaza	P20/P21
Y26	Yanagawa	East Ōeda-Shimizumae Canal Site	P20
H1	Hobara	Date City Hall Hobara Main Office	P29
H2	Hobara	Hobara Elementary School	P28/P29
H3	Hobara	Community Fire Corps, Hobara Branch, 5th Division, 7th Company Fire Station	P28
H4	Hobara	Kamihobara District Exchange Hall	P28
H5	Hobara	Takako Assembly Hall	P28/P34
H6	Hobara	Community Fire Corps, Hobara Branch, 1st Division, 3rd Company Fire Station	P28/P29・ P34/P35
H7	Hobara	Tominari District Exchange Hall	P34



No.	Area	Location	Page of 【Date City HAZARD MAP (Japanese version)】
H8	Hobara	Community Fire Corps, Hobara Branch, 2nd Division, 1st Company Fire Station	P35
H9	Hobara	Community Fire Corps, Hobara Branch, 2nd Division, 2nd Company Fire Station	P34
H10	Hobara	Community Fire Corps, Hobara Branch, 2nd Division, 3rd Company Fire Station	P34
H11	Hobara	Hashirazawa District Exchange Hall	P35
H12	Hobara	Community Fire Corps, Hobara Branch, 3rd Division, 1st Company Fire Station	P29/P35
H13	Hobara	Ōta Children's Hall	P29
H14	Hobara	Community Fire Corps, Hobara Branch, 4th Division, 2nd Company Fire Station	P30
H15	Hobara	Community Fire Corps, Hobara Branch, 4th Division, 3rd Company Fire Station	P30
H16	Hobara	Community Fire Corps, Hobara Branch, 4th Division, 4th Company Fire Station	P29
H17	Hobara	Community Fire Corps, Hobara Branch, 5th Division, 6th Company Fire Station	P29
R1	Ryōzen	General Affairs Office, Ryōzen Branch	P36
R2	Ryōzen	Ryōzen Central Exchange Hall	P36
R3	Ryōzen	Yatsu District	P36
R4	Ryōzen	Ryōzen District Exchange Hall	P31/P37
R5	Ryōzen	Community Fire Corps, Ryōzen Branch, 3rd Division, 1st Company Fire Station	P32
R6	Ryōzen	Ōishi-Tanaka District Public Road Site	P38
R7	Ryōzen	Saka-no-Ue Assembly Hall	P43
R8	Ryōzen	Former Ishido Clinic	P41
R9	Ryōzen	Community Fire Corps, Ryōzen Branch, 2nd Division, 3rd Company Fire Station	P42
R10	Ryōzen	Oguni District Exchange Hall	P39
R11	Ryōzen	Shimo-Oguni Central Assembly Hall	P35/P39
R12	Ryōzen	Yamatoda Central Assembly Hall	P37
R13	Ryōzen	Nakagawa Community Center	P37
R14	Ryōzen	Yamanogawa Community Contact Center	P30
R15	Ryōzen	Izumihara Labor Exchange Center	P31
R16	Ryōzen	Koeda Assembly Hall	P37
T1	Tsukidate	General Affairs Office, Tsukidate Branch	P40
T2	Tsukidate	Tsukidate Elementary School	P40/P41
T3	Tsukidate	Nunokawa District Exchange Hall	P41
T4	Tsukidate	Tsukidate Town Meeting Facility	P41
T5	Tsukidate	Nunokawa-Nitanda District Public Road Site	P41
T6	Tsukidate	Miyoda District Exchange Hall	P40
T7	Tsukidate	Yumemi-no-Sato Plaza Meeting Facility	P40/P41
T8	Tsukidate	Shimotodo District Exchange Hall	P46
T9	Tsukidate	Kamitedo 1st Group Assembly Hall	P46
T10	Tsukidate	Tsukidate Sports Field	P46
T11	Tsukidate	Public road in front of the Kamitedo 3rd Group Multipurpose Assembly Hall	P46
T12	Tsukidate	Nukada 3rd Group Public Hall	P46

## Guide to Evacuation Actions

### Things to Keep in Mind when Evacuating from Your Home

#### ! Clothing for Evacuation

- Wear a helmet or hat, etc.
- Put your emergency kit into a backpack and carry it on your back (so both your hands are free).
- Wear pants and long-sleeved shirts.
- Put on cotton or other gloves.
- Wear shoes that are low and thick, and you are accustomed to wearing.
- When evacuating at night, carry a flashlight.



#### ! Points for Times of Evacuation

- Before leaving your home, check once again for any sources of ignition (fire hazards).
- Shut off the main gas valve, and throw down (turn off) the main circuit breaker.
- Take as little items with you as possible.
- Call out to the people in your neighborhood, and act as a group.
- Walk to the evacuation destination (if possible, do not use a motor vehicle or bicycle).
- Avoid narrow streets, concrete block walls, the space beside vending machines, and areas with a lot of glass or signboards
- Make arrangements to assist children, disabled people, the elderly, and others who may require assistance evacuating.



#### ! Evacuating with Pets

- In general, pets that can be brought along during evacuation are dogs, cats, and small animals (rabbits and birds, etc.).  
Additionally, responsibility for the care of pets is to be taken up by the pet owner.
- Pets are to be kept in a cage or similar at a designated place, with the pet owner providing all necessary care. Additionally, pets shall not enter the living quarters. Letting pets run free outdoors is also prohibited.

The above are general points to keep in mind when evacuating. Please refer to the separate pages corresponding to each type of disaster for additional points to keep in mind.

## Classification of Shelters, etc.

### Designated emergency evacuation area

The mayor of a municipality designates facilities or places that meet certain standards for safety, etc., for each type of disaster as evacuation sites for people to escape danger when a disaster has occurred or is likely to occur. (Article 49-4 of the Disaster Countermeasures Basic Act)

### Designated evacuee shelter

The mayor of a city or village designates these facilities to allow evacuated residents to stay until the danger of a disaster is over, or to temporarily house residents who cannot return home due to a disaster. (Article 49-7 of the Disaster Countermeasures Basic Act)

### Assisted care evacuee shelter

These are secondary evacuation centers that are specially opened to accommodate the elderly, people with disabilities, and others who require special care and attention and who may have difficulty living in designated evacuation centers.

## List of Evacuation Facilities

○...available    ×...unavailable    ○\*...May not be available depending on disaster conditions

No.	Name		Page of [Date City HAZARD MAP(Japanese version)]	Designated evacuee shelter	Designated emergency evacuation area	Assisted care evacuee shelter	Suitability for each type of disaster			
	Address	Supplement					Flooding	Landslide disaster	Earthquake	Large-scale fire
1	Date City Furusato Hall Maekawara 63		P27	●	●		×	○	○	○
2	Date Health & Welfare Center Maekawara 17-1		P27	●	●		○*	○	○	○
3	Date Gymnasium Maekawara 37-1		P27	●	●		×	○	○	○
4	Hakozaki Rural Environment Improvement Center Hakozaki, Odate 29-3		P27	●	●		○	○	×	○
5	East Date Sports Grounds Fushiguro, Ippon-Ishi 41-2		P28		●		○	○	○	○
6	East Date District Exchange Hall Fushiguro, Ippon-Ishi 41-2		P28	●	●		○	○	○	○
7	Date Sports Grounds Ipponmatsu 64-1		P27		●		×	○	○	○
8	Seikō Gakuin High School Date-gun, Koori-machi, Narita, Doi-no-Uchi 10 Rokkaku 3	Ground Gymnasium	P27	● ●	● ●		○ ○	○ ○	○ ○	○ ○
9	Date Middle School Hakozaki, Oki 110	School bldg Ground Gymnasium	P27	● ● ●	● ● ●		○* × ○*	○ ○ ○	○ ○ ○	○ ○ ○
10	Date Elementary School Tatenouchi 20	School bldg Ground Gymnasium	P27	● ● ●	● ● ●		○ ○ ○	○ ○ ○	×	○ ○ ○
11	East Date Elementary School Fushiguro, Doinouchi 42	School bldg Ground Gymnasium	P28	● ● ●	● ● ●		○* × ○*	○ ○ ○	○ ○ ○	○ ○ ○
12	Date Community Contact Center Hakozaki, Kawabata 7		P27	●	●	●	×	○	○	○
13	Date Central Exchange Hall Kitaushiro 22-1		P27	●	●		○	○	○	○
14	Date Surikami Manor Ipponmatsu 64		P27			●	○*	○	○	○
15	Yume Mirai Group Home Mizunuki 12		P27			●	×	○	○	○
16	Date Ryoku Fuen Babaguchi 36-1		P27			●	○	○	○	○
17	General Affairs Office, Yanagawa Branch Yanagawa-machi, Aobachō 1		P24	●	●		○*	○	○	○
18	Yanagawa Elementary School Yanagawa-machi, Kita-Motomachi 21-1		P24	●	●		×	○	○	○
19	Yanagawa Middle School Yanagawa-machi, Shōbusawa 141-6		P24/P25	●	●		○	○	○	○
20	Yanagawa High School Yanagawa-machi, Tsurugaoka 33		P24/P25	●	●		○*	○	○	○

○...available    ×...unavailable    ○\*...May not be available depending on disaster conditions

No.	Name		Page of [Date City HAZARD MAP(Japanese version)]	Designated evacuee shelter	Designated emergency evacuation area	Assisted care evacuee shelter	Suitability for each type of disaster			
	Address	Supplement					Flooding	Landslide disaster	Earthquake	Large-scale fire
21	Yanagawa Gymnasium Yanagawa-machi, Kitamachigashira 70		P24/P25	●	●		○	○	○	○
22	Yanagawa Health & Welfare Hall Yanagawa-machi, Motojinnai 1-2		P24	●	●		×	○	○	○
23	Yanagawa Central Exchange Hall Yanagawa-machi, Minami-Motomachi 35		P24	●	●		×	○	○	○
24	Awano Elementary School Yanagawa-machi, Awano, Numagashira 28		P23	●	●		×	○	○	○
25	Awano District Exchange Hall Yanagawa-machi, Ninofukuro, Shōwa 3-2		P23	●	●		×	○	○	○
26	Sekimoto Elementary School Yanagawa-machi, Nitta, Minami-Kōya 33		P30	●	●		○	○	○	○
27	Sekimoto District Exchange Hall Yanagawa-machi, Nitta, Terayama 4-5		P30	●	●		○	○	○	○
28	Former Shirane Elementary School Yanagawa-machi, School bldg Shirane, Baba 10 Ground Gymnasium		P26	●	●		○	○	○	○
29	Nitta Community Contact Center Yanagawa-machi Yōkōdai 1-1		P30	●	●		○	○	○	○
30	Shirane District Exchange Hall Yanagawa-machi, Shirane, Kitamukai 15		P26	●	●		○	○	○	○
31	Former Yamafun'yū Elementary School Yanagawa-machi, School bldg Yamafun'yū, Takakura 61 Ground Gymnasium		P22/P26	●	●		○	×	○	○
32	Yamafun'yū District Exchange Hall Yanagawa-machi, Yamafun'yū, Bōmae 18		P22/P26	●	●		○	○	○	○
33	Former Tomino Elementary School Yanagawa-machi, Fun'yū, Sawaguchi 20 Ground Gymnasium		P25	●	●		○	○	○	○
34	Tomino District Exchange Hall Yanagawa-machi, Fun'yū, Dōmae 55		P25	●	●		○	○	○	○
35	Former Isazawa Elementary School Yanagawa-machi, Isazawa, Miyashita 90-4		P21	●	●		○	×	○	○
36	Isazawa District Exchange Hall Yanagawa-machi, Isazawa, Miyashita 4-1		P20/P21	●	●		○	○	○	○
37	Isazawa Athletic Plaza Yanagawa, Isazawa, Matsubayashi 183		P20/P21		●		○	○	○	○
38	Former Ōeda Elementary School Yanagawa-machi, Higashi-Ōeda, Higashi-Arata 2 Ground Gymnasium		P20/P24	●	●		○	○	○	○
39	East Ōeda District Exchange Hall Yanagawa-machi, Higashi-Ōeda, Kitamachi 132-1		P20/P24	●	●		○	○	○	○
40	Yanagawa Health & Longevity Center Yanagawa-machi, Shōbusawa 84		P24/P25	●	●		○	○	○	○
41	Shirane Rural Plaza Yanagawa-machi, Shirane, Wakabayashi 78		P26		●		○	○	○	○
42	Ōeda Rural Plaza Yanagawa-machi, Higashi-Ōeda, Kitamachi 132		P20/P24		●		○	○	○	○
43	Yamafun'yū Rural Plaza Yanagawa-machi, Yamafun'yū, Takahashi 17		P22/P26		●		○	○	○	○
44	Yanagawa Home Yanagawa-machi, Higashi-Dobashi 65-1		P24			●	×	○	○	○
45	La Soeur DATE Yanagawa-machi, Higashi-Shionogawa 56-1		P24			●	×	○	○	○
46	La Soeur DATE Yanagawa-machi, East Shionogawa 56-1		P24			●	×	○	○	○
47	Sakura House Date City, Yanagawa-machi, Sakura-chō 1172		P24/P25			●	○	○	○	○
48	Tsūjō Kaigo Hiyori Yanagawa-machi, Akagorin 75-3		P24/P25			●	○	○	○	○
49	Tōryō Middle School Hobara-machi, Toyota 1-1 School bldg Ground Gymnasium		P29	●	●		○	○	○	○
50	Nakaze Sports Grounds Hobara-machi, Nakaze, Kamimatsu 27-2		P23/P29		●		×	○	○	○
51	Hobara High School Hobara-machi, Motoki 23 Ground Gymnasium		P29	●	●		×	○	○	○
52	Hobara Elementary School Hobara-machi, Yayoi-chō 15		P28/P29	●	●		×	○	○	○
53	Ōta Elementary School Hobara-machi, Ōizumi, School bldg Maebarauchi 111 Ground Gymnasium		P29	●	●		○*	○	○	○
54	Hobara Total Park Hobara-machi, Ōizumi, Miyawaki 265		P29	●	●		○*	○	○	○

○...available    ×...unavailable    ○\*...May not be available depending on disaster conditions

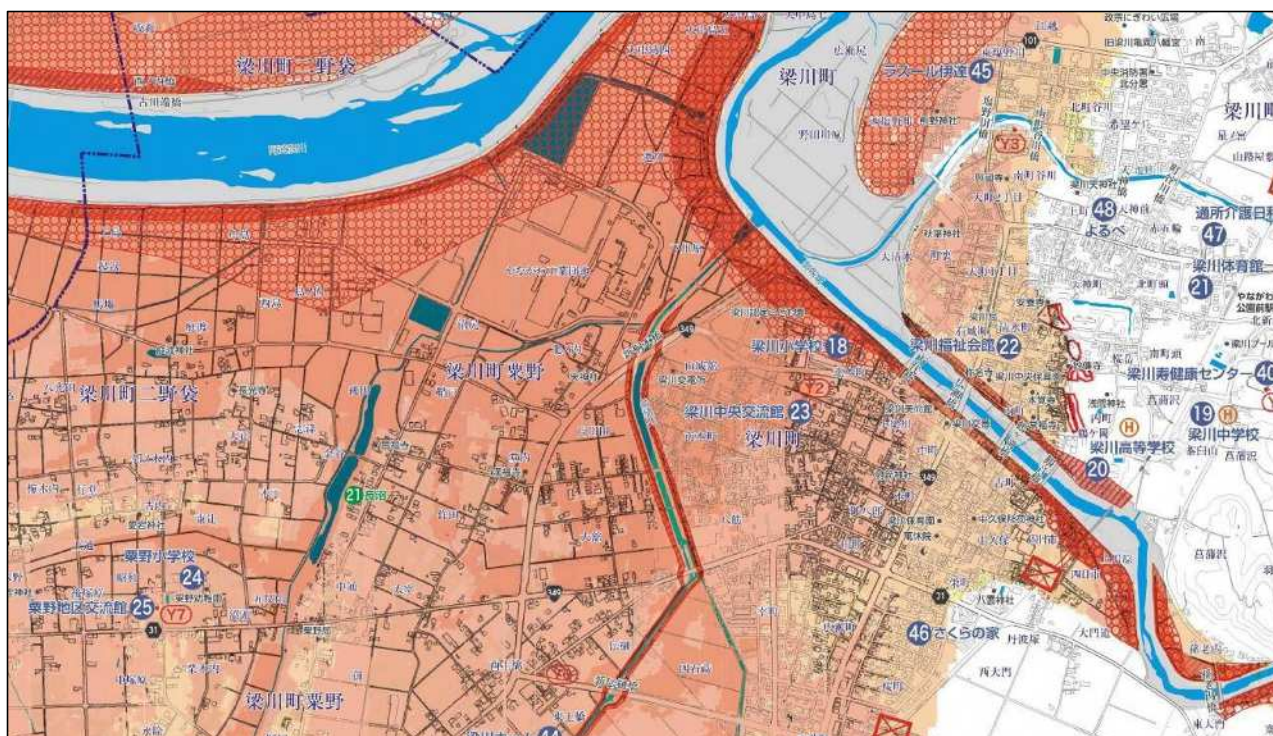
No.	Name		Page of [Date City HAZARD MAP(Japanese version)]	Designated evacuee shelter	Designated emergency evacuation area	Assisted care evacuee shelter	Suitability for each type of disaster			
	Address	Supplement					Flooding	Landslide disaster	Earthquake	Large-scale fire
55	<b>Kamihobara Elementary School</b> Hobara-machi, Kamihobara, Mukushirouchi 11		P28	●	●		○	○	○	○
56	<b>Shōyō Middle School</b> Hobara-machi, Ōyanagi, Mukaiyama 1		P35	●	●		○	○	○	○
57	<b>Hashirazawa Elementary School</b> Hobara-machi, Tokorozawa, Higashi-Hata 100		P35	●	●		○	○	○	○
58	<b>Former Tominari Elementary School</b> Hobara-machi, Tomizawa, Hayama 5-3	Ground Gymnasium	P34/P35	●	●		○	○	○	○
59	<b>Hobara Central Exchange Hall</b> Hobara-machi, Miyashita 111-4		P29	●	●		○*	○	○	○
60	<b>Hobara Civic Center</b> Hobara-machi, Miyashita 111-4		P29	●	●		○*	○	○	○
61	<b>Hobara Gymnasium</b> Hobara-machi, Miyashita 111-4		P29	●	●		○*	○	○	○
62	<b>Hobara Community Contact Center</b> Hobara-machi, Nishimachi 113		P28/P29	●	●		×	○	○	○
63	<b>Hobara Station Community Center</b> Hobara-machi, Higashi-Nozaki 45-9		P29	●	●		○*	○	○	○
64	<b>Second Hobara Gynasium</b> Hobara-machi, 10 chōme 17		P29	●	●		○*	○	○	○
65	<b>Industry Promotion Hall</b> Hobara-machi, Miyashita 111-2		P29	●	●		○*	○	○	○
66	<b>Fujitsu Isotec Gymnasium</b> Hobara-machi, Higashi-Nozaki 135		P29	●	●		○*	○	○	○
67	<b>Ōta District Exchange Hall</b> Hobara-machi, Ōizumi, Maebarauchi 106-1		P29	●	●		○*	○	○	○
68	<b>Hobara Health Center</b> Hobara-machi, Ōizumi, Ōchiuchi 100		P29	●	●		○*	○	○	○
69	<b>Kamihobara District Exchange Hall</b> Hobara-machi, Kamihobara, Kaminohara 24-1		P28	●	●		○	○	○	○
70	<b>Hashirazawa District Exchange Hall</b> Hobara-machi, Tokorozawa, Higashihata 100		P35	●	●		○	○	○	○
71	<b>Tominari District Exchange Hall</b> Hobara-machi, Tomizawa, Hayama 8		P34/P35	●	●		○	○	○	○
72	<b>Ōta Certified Childcare Center</b> Hobara-machi, Ōizumi, Maebarauchi 246-1		P29	●	●		○*	○	○	○
73	<b>Kamihobara Certified Childcare Center</b> Hobara-machi, Kamihobara, Kaminohara 22-1		P28	●	●		○	○	○	○
74	<b>Famille</b> Hobara-machi, Kamihobara, Henshōgen 8-8		P28/P34			●	○	○	○	○
75	<b>Happy Island Hobara</b> Hobara-machi, Izumimachi 1-1		P28/P29			●	○*	○	○	○
76	<b>Prime Care TŌKARIN</b> Hobara-machi, Okashiro 9-1		P29			●	○	○	○	○
77	<b>NPO Bone-ru</b> Hobara-machi, Teppō-chō 13-7		P29			●	○*	○	○	○
78	<b>Ryōzen Athletic Plaza</b> Ryōzen-machi, Kakeda, Niguramawashi 1-4		P36		●		○	×	○	○
79	<b>Ryōzen General Health &amp; Welfare Center</b> Ryōzen-machi, Kakeda, Machita 14-5		P36	●	●	●	○	×	○	○
80	<b>Ryōzen Central Exchange Hall</b> Ryōzen-machi, Kakeda, Nishiura 17		P36	●	●		○	○	○	○
81	<b>Ryōzen Gymnasium</b> Ryōzen-machi, Kakeda, Nishiura 17		P36	●	●		○	○	×	○
82	<b>Ryōzen Central Exchange Hall</b> Ryōzen-machi, Ōishi, Nishidate 73		P31/P37	●	●		○	○	○	○
83	<b>Ishido District Exchange Hall</b> Ryōzen-machi, Ishida, Miyashita 12-8		P41	●	●		○	○	○	○
84	<b>Oguni District Exchange Hall</b> Ryōzen-machi, Kami-Oguni, Koshimaki 7		P39	●	●		○	○	○	○
85	<b>Kakeda Elementary School</b> Ryōzen-machi, Kakeda, Takanoue 2		P36	●	●		○	○	○	○
86	<b>Ryōzen Middle School</b> Ryōzen-machi, Kakeda, Shimokawahara 30	School bldg Ground Gymnasium	P36	●	●		○	○	×	○
87	<b>Yamanogawa Community Contact Center</b> Ryōzen-machi, Yamanogawa, Nemoto 35-1		P30	●	●		○	×	○	○
88	<b>Former Ōishi Elementary School</b> Ryōzen-machi, Ōishi, Minowa 27	School bldg Ground Gymnasium	P37	●	●		○	×	×	○
89	<b>Nakagawa Community Center</b> Ryōzen-machi, Nakagawa, Tantsuru 1		P37	●	●		○*	○	○	○
90	<b>Izumihara Labor Exchange Center</b> Ryōzen-machi, Izumihara, Komeda 3-3		P31	●	●		○	○	○	○

○...available    ×...unavailable    ○\*...May not be available depending on disaster conditions

No.	Name		Page of [Date City HAZARD MAP(Japanese version)]	Designated evacuee shelter	Designated emergency evacuation area	Assisted care evacuee shelter	Suitability for each type of disaster			
	Address	Supplement					Flooding	Landslide disaster	Earthquake	Large-scale fire
91	<b>Former Izumihara Elementary School</b>		P31	●	●		○	○	×	○
	Ryōzen-machi,	School bldg								
	Izumihara, Komeda 5	Ground Gymnasium								
92	<b>Yamatoda Central Assembly Hall</b>		P37	●	●		○*	○	○	○
	Ryōzen-machi, Yamatoda, Miyashita 1									
93	<b>Ishida Elementary School</b>		P41	●	●		○	○	○	○
	Ryōzen-machi, Ishida, Matoba 6									
94	<b>Shimo-Oguni Central Assembly Hall</b>		P35/P39	●	●		○	×	×	○
	Ryōzen-machi, Shimo-Oguni, Horinouchi 1									
95	<b>Oguni Elementary School</b>		P35/P39	●	●		○	○	○	○
	Ryōzen-machi, Shimo-Oguni, Nakajima 26-1									
96	<b>Roadside Station Date-no-Sato RYOZEN</b>		P36/P40	●	●		○	×	○	○
	Ryōzen-machi, Shimo-Oguni, Sakuramachi 1									
97	<b>Kō-no-Sato</b>		P36			●	○	○	○	○
	Ryōzen-machi, Kakeda, Myōshōji 21-1									
98	<b>Kakeda Group Home</b>		P36			●	○	○	○	○
	Ryōzen-machi, Kakeda, West Side 20-1									
99	<b>Kakeda House</b>		P36			●	○	○	○	○
	Ryōzen-machi, Kakeda, West Side 20-1 2F									
100	<b>Tsukidate Academy</b>		P40/P46	●	●		○	○	○	○
	Tsukidate-machi, Tsukidate, Kubota 1									
101	<b>Site of the former Tsukidate Town Hall</b>		P40/P41		●		○	×	○	○
	Tsukidate-machi, Tsukidate, Tononoue 39									
102	<b>Spark Tsukidate</b>		P46		●		○	○	○	○
	Tsukidate-machi, Nukada, Tateyama 1									
103	<b>Nunokawa Children's Playground</b>		P41		●		○	○	○	○
	Tsukidate-machi, Nunokawa, Jaku 1-8									
104	<b>Former Tsukidate Elementary School</b>		P40/P41	●	●		○*	○	×	○
	Tsukidate-machi,	School bldg								
	Nunokawa, Nishihara 6	Ground Gymnasium								
105	<b>Tsukidate Forest Park</b>		P41	●	●		○	○	○	○
	Tsukidate-machi, Nunokawa, Ōsakutayama 1-1									
106	<b>Tsukidate Central Exchange Hall</b>		P40/P41	●	●		×	○	○	○
	Tsukidate-machi, Tsukidate, Urushibō 19-1									
	<b>Tsukidate Gymnasium</b>		P40/P41	●	●		×	○	○	○
	Tsukidate-machi, Tsukidate, Urushibō 19-1									
107	<b>Nunokawa District Exchange Hall</b>		P41	●	●		○	×	○	○
	Tsukidate-machi, Nunokawa, Miyanomae 3-4									
108	<b>Miyoda District Exchange Hall</b>		P40	●	●		○	○	○	○
	Tsukidate-machi, Miyoda, Koseki 54									
109	<b>Miyoda Community Center</b>		P40	●	●		○*	○	○	○
	Tsukidate-machi, Miyoda, Shinhorinouchi 45-1									
110	<b>General Affairs Office, Tsukidate Branch</b>		P40	●	●		○*	○	○	○
	Tsukidate-machi, Tsukidate, Kubota 5									
111	<b>Tsukidate Certified Childcare Center</b>		P40/P46	●	●		×	○	○	○
	Tsukidate-machi, Tsukidate, Sekinoshita 8-2									
112	<b>Tsukidate Health &amp; Welfare Center</b>		P40/P46	●	●	●	×	○	○	○
	Tsukidate-machi, Tsukidate, Sekinoshita 12-1									
113	<b>Tsukidate Sports Field</b>		P46		●		○	○	○	○
	Tsukidate-machi, Nukada, Tateyama 1									
114	<b>Shimotedo Children's Playground</b>		P46		●		×	×	○	○
	Tsukidate-machi, Shimotedo, Machi 1-1									
115	<b>Former Ote Elementary School</b>		P46	●	●		○	○	○	○
	Tsukidate-machi, Nukada, Tateyama 10									
116	<b>Shimotedo District Exchange Hall</b>		P46	●	●		○*	×	○	○
	Tsukidate-machi, Shimotedo, Machi 37									
117	<b>Tsukidate Hana Kōbō</b>		P46	●	●		○	○	○	○
	Tsukidate-machi, Shimotedo, Terakubo 7									
118	<b>Seifuen</b>		P40			●	○	○	○	○
	Tsukidate-machi, Miyoda, Tsukizakiyama 1-7									
119	<b>Kuwata-no-Mi</b>		P40			●	×	○	○	○
	Tsukidate-machi, Miyoda, Fusoubatake 42-1									



## Usage guide for Maps



### Sediment Disaster Alert Area ・ Special Alert Area

Steep Slope Special Alert Area



Debris Flow Special Alert Area



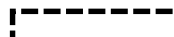
Steep Slope Alert Area



Debris Flow Alert Area

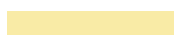


Landslide Alert Area



### Anticipated Flood Area ・ Flood Hazard Area for Housing Collapse

Below 0.5m depth



Housing Collapse  
(River Bank Erosion)



Below 3.0m depth



Housing Collapse  
(Flood Flow)



Below 5.0m depth



Below 10.0m depth



Buffer Zone



Below 20.0m depth



(Flooding hazard information is not available,  
but the area is considered dangerous.)

### Designated emergency evacuation area ・ Designated evacuee shelter ・ Disaster prevention radii ・ Under pass



Designated emergency evacuation area  
Designated evacuee shelter



Disaster prevention radii



Reservoir



Under pass



Temporary Heliport

## Everyday Preparations

### (Our Family's Disaster Preparedness Measures ①)

#### Safety Measures inside the Home

Check to make sure you have made preparations beforehand.

#### ! Make a Safe Space at Home

When there are multiple rooms, put all the furniture together in one room in a space with little foot traffic. If that is impossible, rearrange the furniture so that there is even just a small safe space.

#### ! If possible, do not place furniture in bedrooms, or rooms inhabited by children or the elderly

If an earthquake strikes while you are sleeping, there is a risk of furniture toppling over. When furniture is necessary, choose the shortest furniture possible and find a way to place the furniture in such a way that it does not obstruct exits or fall on you while you are sleeping.



#### ! Prevent Furniture from Toppling

It is easy for furniture to topple if there is space between it and the wall or a pillar. Insert a small board or something similar underneath the furniture, so that it is settled more firmly against the wall or pillar. Additionally, use metal fixtures or fastening implements for more reliable toppling prevention measures.

#### ! For Safe Evacuation, Don't Place Things in Exits or Walkways

Don't place things likely to topple, such as furniture, in the walkways to exits, like the home's entrance. Additionally, if a large amount of things are placed near the entrance, it may obstruct the exit during an emergency.

#### ! Prevent the Outbreak of Electrical Fires

The origin of many fires caused by earthquakes is related to electricity. There are fires caused by the toppling over of electric stoves or electric heaters, as well as electrical flow resumption fires when a blackout ends (from flames coming out of a damaged electrical cord, etc.).

To prevent electrical fires, the installation of earthquake-sensitive circuit breakers is recommended.

#### ! Keep Disaster Response Goods Close at Hand

When sleeping at night, you may not be able to easily check your surroundings due to a blackout.

In the case of an earthquake, glass may be shattered and you could be trapped within your room. Keep a flashlight, whistle, slippers, etc., within reach of where you normally sleep.



## Points to Prevent the Falling and Toppling of Furniture

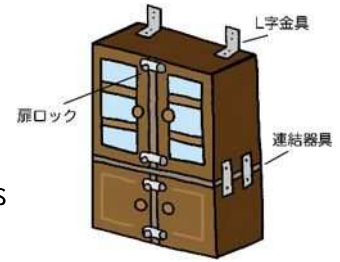
Make sure that you have made the proper preparations beforehand.

### Cabinets & Bookshelves

Fix them in place with L-shaped brackets or stay bars, etc. When two separate items are stacked, use metal fixtures to firmly connect them.

### Dish Cabinet

Fix them in place with L-shaped brackets, etc., and cover the shelves with a dishcloth or slip-resistant material. Place heavy dishes near the bottom. Install a latch to prevent the door from opening.



### Lighting Fixtures

Use chains and metal fixtures to secure them at multiple points. With florescent lamps, use heat resistant tape to secure both ends of the fluorescent tube.

### Refrigerator

Secure it to walls or pillars with anti-topple belts at the designated spots (carrying handles, etc.).

### Television

Securing the television to the TV stand is effective. If there are dedicated installation points on the legs or elsewhere use fasteners such as bolts to secure it; otherwise secure it with anti-topple belts.



### Piano

Wrap the main body in nylon tape, and secure it with its dedicated metal fasteners. Place anti-slip implements on the legs.



# Everyday Preparations

## (Our Family's Disaster Preparedness Measures ②)

### Home Safety Measures

Please check the points below, and make repairs where appropriate.

#### Roof

Reinforce unstable roof-mounted antennas. Check if any roof tiles are cracked, broken, slipping, or coming off. Check if sheet metal is riding up or coming off.

#### Outer Walls

Check wooden walls for swelling or decay. Check mortar walls for cracks or fissures.

#### Concrete Block Walls & Gateposts

Reinforce anything without buttresses or sturdy in-earth foundations. Check if there are any cracks, or rusting in the steel reinforcement.



#### Things around the Home

Check if propane gas cylinders are firmly secured. Keep potted plants tidy and in order; anything likely to be blown away should be brought inside beforehand.

#### Roof Gutters & Storm Shutters

Check if fallen leaves or sand are blocking the roof gutters. Check if the storm shutters are loose or shaky. Check if the joints are off, or if the paint is peeling; check for corrosion.

#### Window Glass

Prepare for flying debris in strong wind, and take steps such as protecting the outside surface with boards, etc. Attach anti-shatter film; and check if there are cracks, or if the window frame is unsteady.

#### Secure Emergency Exits

If possible, do not place items such as bicycles and baby carriages near walkways or entrances, so that they do not hinder evacuation.

#### Balcony

Bring any potted plants, clothes-drying apparatus, or other things that have a high risk of being blown away, indoors.

#### Ditches

Roads may flood as a result of drainage ditches clogging up. Be sure to clean them regularly.

### Preventative Measures Against Landslides

Near cliffs and slopes, be sure to keep the following in mind.

- ① Remove rocks and clumps of soil that are on the verge of falling.
- ② At places on the verge of collapsing, make a fence of trees or boards, or add stonework.
- ③ Repair or reinforce broken stone walls.
- ④ Cut off branches of large trees that shake in the wind, so that they do not disturb the soil.
- ⑤ Prevent rain from soaking into the dangerous areas of cliffs, by covering them with plastic, etc.
- ⑥ Create waterways to prevent rain water from flowing onto cliffs.
- ⑦ Clean any garbage out of waterways.

**Pay proper attention to changes in the condition of slopes.**



# Evacuation Supplies & Items for Stockpiling

“Evacuation Supplies” are the first things you should grab when evacuating.

“Items for Stockpiling” are supplies for self-sufficiency in the days directly after a disaster occurs, until things settle down.

The following are examples of these items. Particularly with evacuation supplies, try to stay at a weight that can be easily carried while evacuating. (15 kg for men, 10 kg for women).

## Safety Measures Surrounding the Home

Make sure you have made preparations beforehand.

### Perform periodic inspections!

To prevent difficulties in a time of crisis, periodically check for any deficiency in evacuation supplies, and the expiration dates of food items.

### Valuable Items

- ☐ Cash ※ Including coins for public telephones
- ☐ Personal stamp
- ☐ Spare keys for your home and car
- ☐ Copies of certificates (health insurance certificate, licenses, bank passbooks, insurance certificates, certificates of title)

### Emergency Food & Drink

- ☐ Emergency rations ※ Things that are lightweight but high in calories
- ☐ Drinking water
- ☐ Bags for water

### Safety Supplies

- ☐ Flashlights ※ Spare batteries as well
- ☐ Helmet
- ☐ Disaster hood
- ☐ Cotton work gloves
- ☐ Slippers
- ☐ Whistle or buzzer ※ To inform others of your location
- ☐ Matches or lighters
- ☐ Blankets or insulated sheets
- ☐ Disposable hand warmers

### Information-Gathering Devices

- ☐ Portable radio ※ Spare batteries as well
- ☐ Charger for mobile phone (smartphone)
- ☐ External battery ※ Those with built-in lights are convenient
- ☐ Writing supplies

### Sanitation Supplies

- ☐ First-aid kit ※ Including household medicine
- ☐ Towels
- ☐ Surgical masks
- ☐ Disinfectant fluid
- ☐ Thermometer
- ☐ Toilet paper
- ☐ Wet tissues
- ☐ Plastic bags
- ☐ Underclothes
- ☐ Diapers

### For Women

- ☐ Feminine care products
- ☐ Portable bidet, ointments
- ☐ Skin care supplies
- ☐ Basic cosmetics

### Households with Pets

- ☐ Information on the owner's emergency contact information, and who to entrust the pet to
- ☐ Therapeutic food, medicine
- ☐ Pet food (enough for 7+ days)
- ☐ Carry bag or cage, etc.
- ☐ Spare collar & leash (standard, non-extendable)
- ☐ Supplies for dealing with excrement

- ☐ Pet sheets
- ☐ Feeding container
- ☐ Towel & brush
- ☐ Toys

Pets are also important family members.

In regards to evacuating with pets, always be prepared.

- Try to have your pet trained and vaccinated to the basic level, as well as have them accustomed to a cage.

- Decide who the pet's owner is.



## Items for Stockpiling

Prepare to be able to provide for yourself for at least three days (if possible, one week)

- ☐ Drinking water ※ 3 liters per person per day
- ☐ Food ※ Besides processed quick-cooking rice, food for long-term storage, etc. Also use the following as part of constantly-used-and-replenished stock
- ☐ Buckets or plastics containers for carrying water
- ☐ Portable gas stove and gas canisters
- ☐ Disposable eating utensils
- ☐ Plastic wrap for food

- ☐ Lantern
- ☐ Emergency toilet
- ☐ Body-wiping sheets
- ☐ Waterless shampoo
- ☐ Packing tape
- ☐ Plastic sheets



Be sure to check the list above and add to it to meet the needs of your family, particularly with baby supplies, supplies for the elderly, and supplies for those who will need special attention in the event of a disaster.