

○ Library Hours

- Tue.-Fri. 9am-7pm
- Sun.& Holidays 9am-5pm

○ Closed Days

- Mondays
- The year-end and New Year holidays
- Special inventory: 7 days in May

○ People Permitted to Make Library Cards

- Anyone who lives, works, or attends school in Date City
- Anyone who lives in Fukushima City or Date-gun

○ Borrowing

A library card is required to borrow books.

To obtain a library card, fill out an application form and show your ID card with your name and address. (ex. individual number card "My Number Card", driver's license, student ID, etc.)

You can check out up to 10 books per every 2 weeks.

★ **CDs and DVDs are available.**

You can check out up to 2 CDs (or DVDs) per every 2 weeks.

○ To check out materials

Bring the materials and your library card to the check-out counter.

Please report any loss of or damage to any library materials.  
In some instances, you may be asked to cover costs incurred from loss of or damage to materials.

We ask that you treat any library items that you use with care.

○ To return materials

To return materials, bring them to the check-out counter.

When the library is closed, you can return your items in the "Book return Box" which is located near the entrance. But please don't put CDs or DVDs in the return box as they are fragile.

If any of your items are overdue, you cannot borrow or reserve other items.

○ Reservations and Requests

If the item you would like to borrow is not on the shelf, you can search using the library's computer system and request it. Interlibrary loan service enables you to borrow books that are not held by your local library from other libraries.

○ Photocopying

Books and materials owned by the library can be copied under the copyright act. The charge per sheet is 10 yen for black/white copies, 50 yen for color copies.

○ Study Room

If you want to use Study Room(2F), fill out an application form and get permission at the check-out counter.

Maximum time: Study Room for 4 hours.

○ Using the Internet

Internet service is available for 30 minutes a day. Please apply to use it.

○ Story Hour

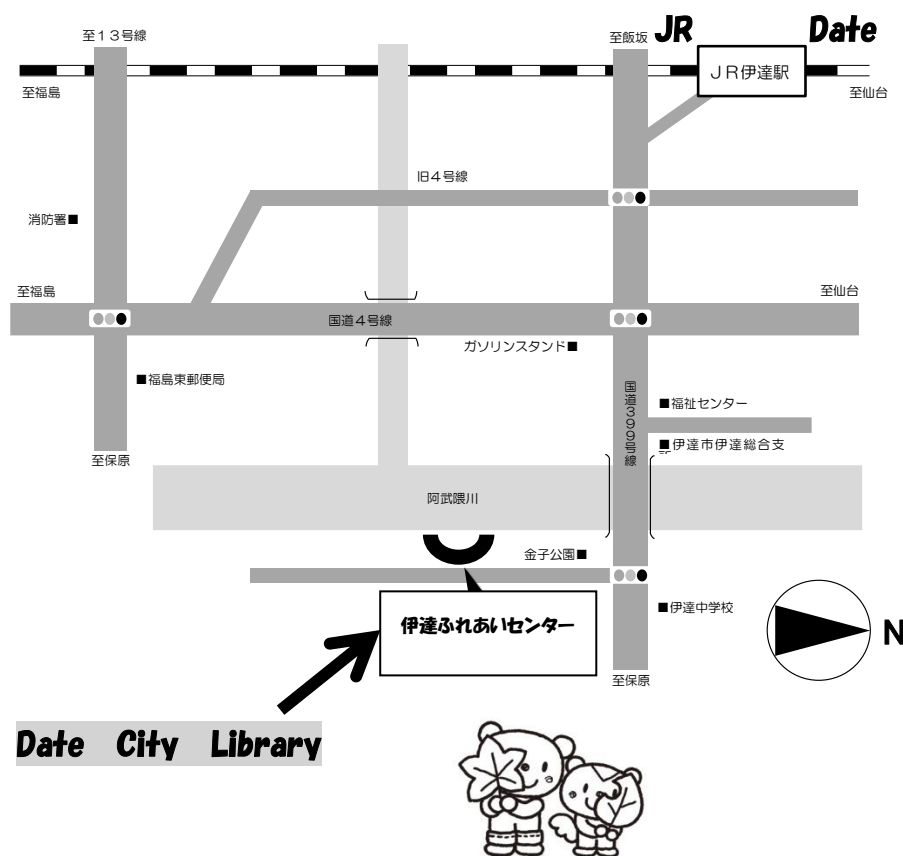
Voluntary storytellers occasionally read books and picture card-shows aloud to the children.

To make our library an oasis for the citizens, we hope you will have good manners and observe the rules below.

- Please do not disturb other people in the library.
- Drinking, eating, and smoking in the library is not allowed.
- You cannot talk on your mobile phone in the library.

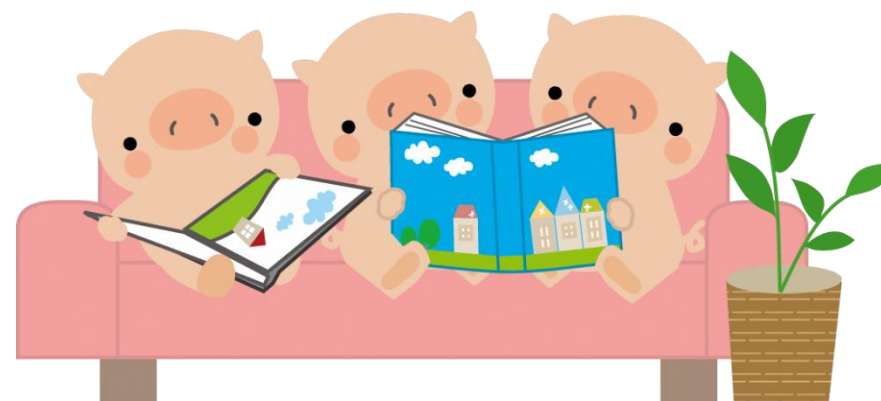
We hope you will treat library books and other items with care.

### How to get to the Date City Library



# Welcome to

## Date City Library



## Date City Library

〒960-0502

7 Kawabata, Hakozaki, Date-shi, Fukushima Ken

TEL:024-551-2132, FAX:024-551-2137

E-mail: [library@city.fukushima-date.lg.jp](mailto:library@city.fukushima-date.lg.jp)

webpage



electronic  
library

